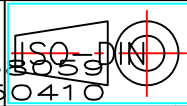


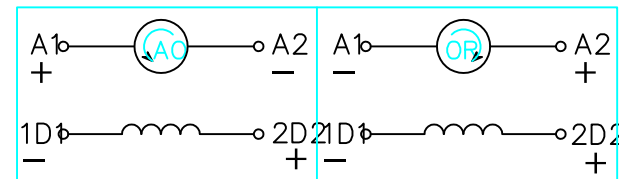
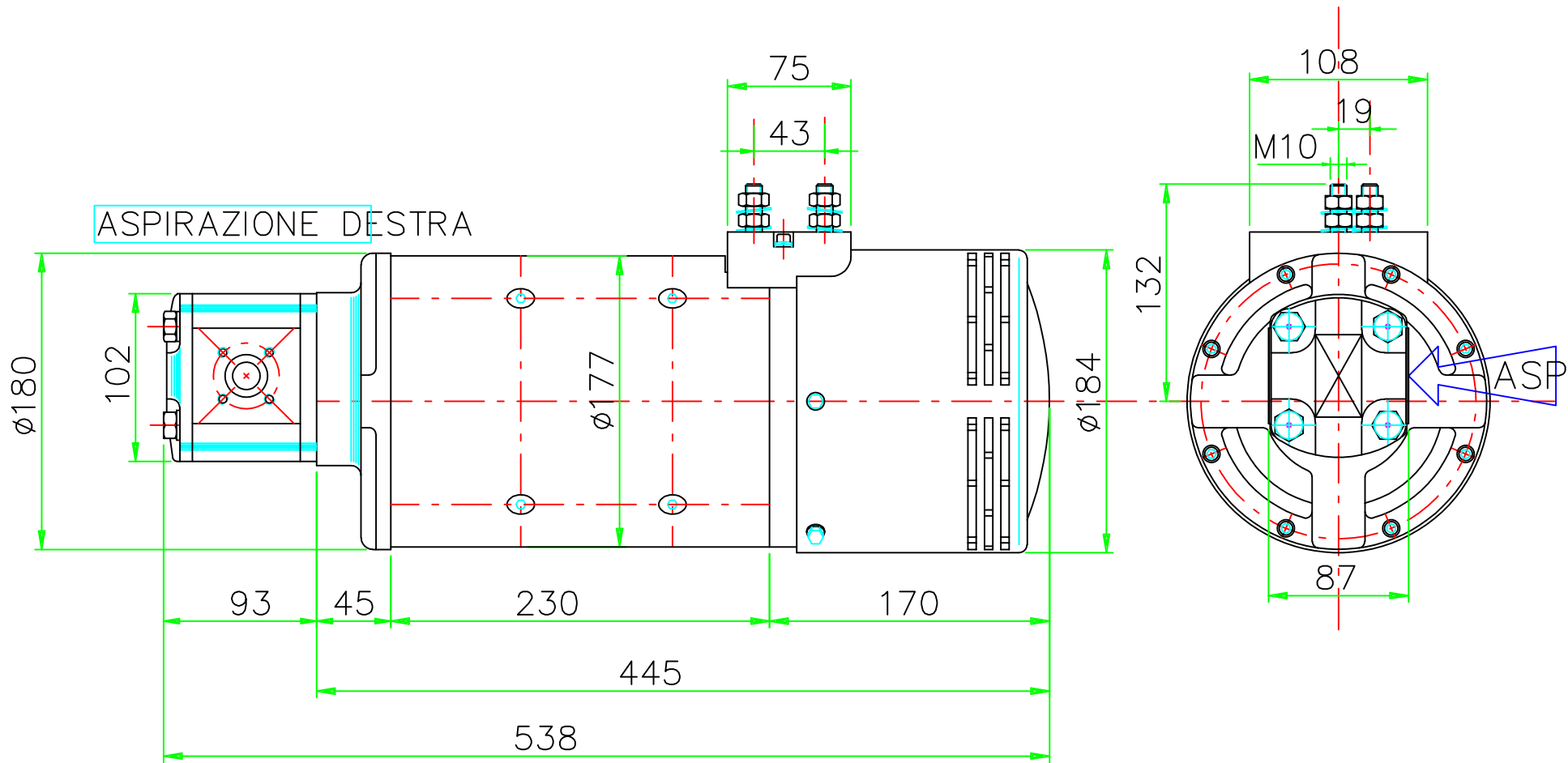
BEST MOTOR

Tel. 059 - 858059
fax. 059 - 8580410



MOTORE POMPA $\phi 177$ CON POMPA cc 8 "GRUPPO-2"
(REV. 0 DEL 15/02/2011)

POTENZA POWER	TENSIONE VOLTAGE	CORRENTE CURRENT	RPM	SERVIZIO SERVICE	SERVIZIO SERVICE	CLASSE ISOL.	VENTILAZIONE	ECCITAZIONE	PESO WEIGHT
5000 W	80 V	75 A	1500	S2 = 60'	S3 = 60 %	H	ESTERNA	Parallelo Shunt	Kg --



Cod. FH502203 Firma PROG. : PO M.

FH502203