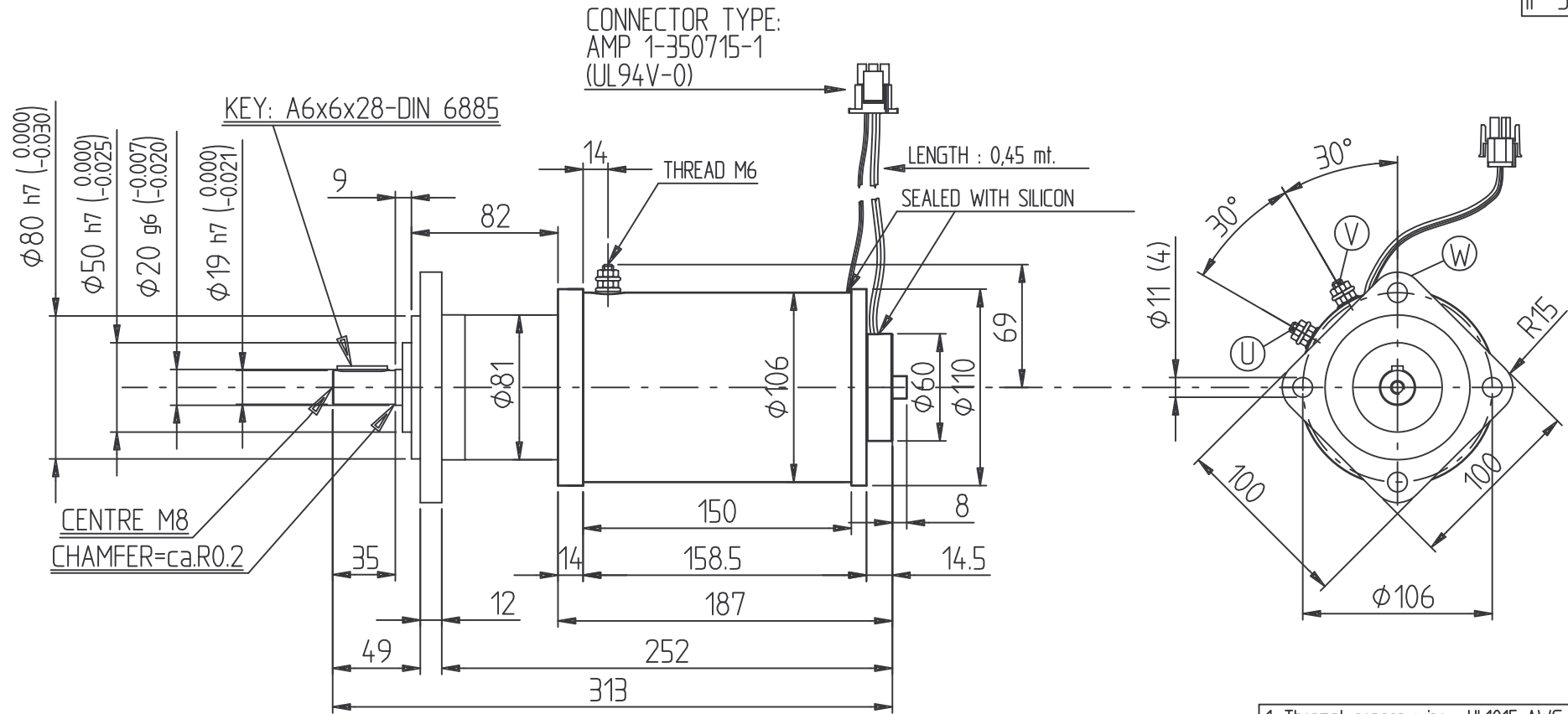


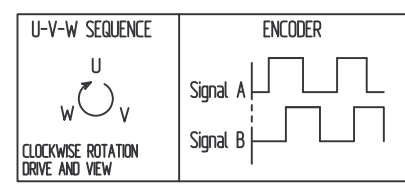
POTENZA POWER 400/600W	MOTOR VOLTAGE 24/36V	MOTOR CURRENT 21A	RPM 2750/4125	SERVIZIO SERVICE S2 = 10'	SERVIZIO SERVICE S3 = 15%	CLASSE ISOL. H	NO VENTILATION	ECCITAZIONE AC100/150HZ	PESO WEIGHT 12KG
------------------------------	----------------------------	-------------------------	------------------	---------------------------------	---------------------------------	----------------------	-------------------	----------------------------	------------------------

IP 54



1. Thermal sensor wire : UL1015 AWG 18
2. Encoder wire : UL2464 AWG 22

INCREMENTAL ENCODER		
N° PULSE REVOLUTION:	4	
N°PIN:	DESCRIPTION:	COLOUR:
1	+VCC	YELLOW
2	GND	BROWN
3	SIGNAL A	WHITE
4	SIGNAL B	GREEN
5	SENSOR KTY 84-130	BLACK
6	SENSOR KTY 84-130	RED



Cod.: G104237U

Firm PROG. : PO M.