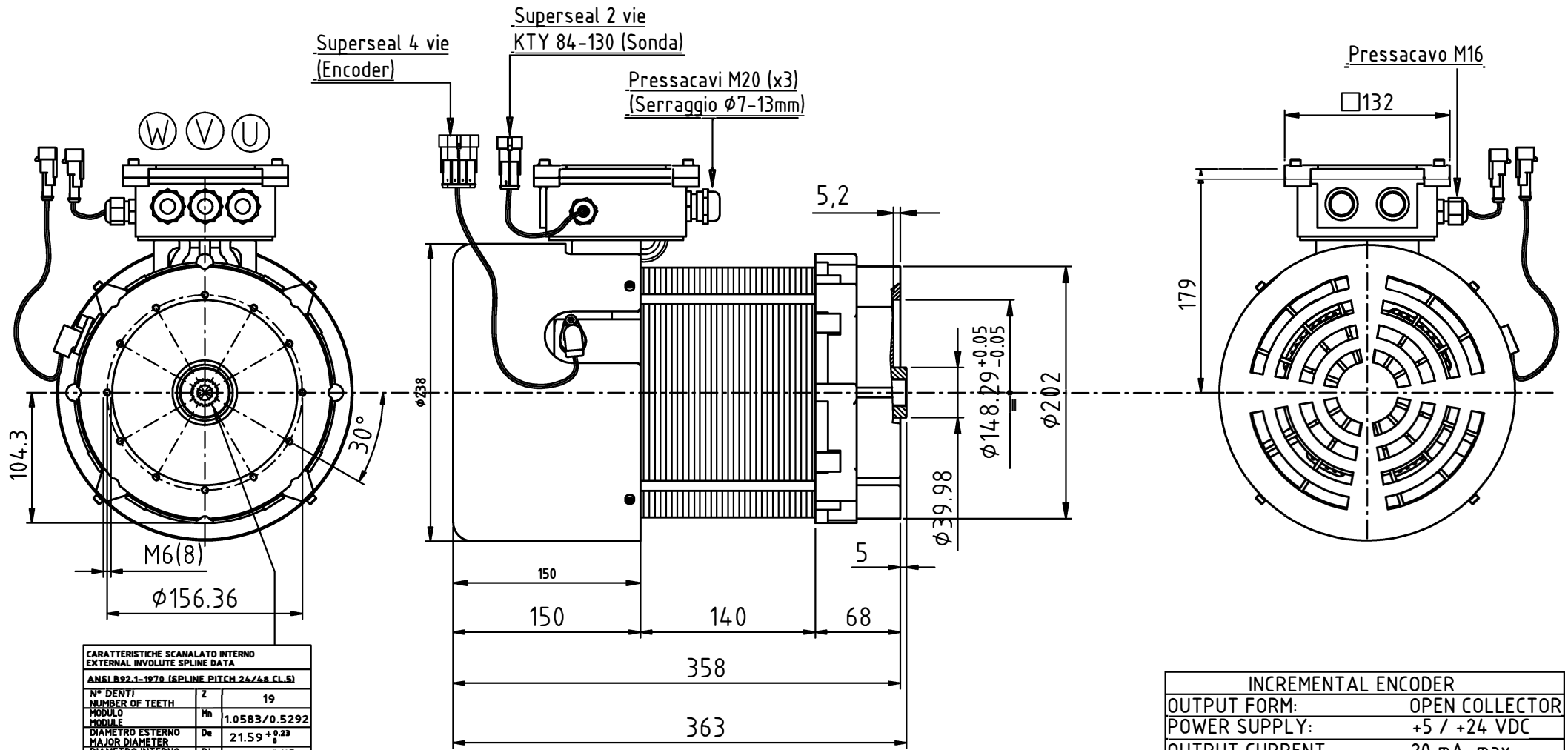


POTENZA POWER 9 kW	TENSIONE VOLTAGE 72VDC-50VAC	CORRENTE CURRENT 160 A	RPM 5000	SERVIZIO SERVICE S2 = 60'	SERVIZIO SERVICE S3 = 70 %	CLASSE ISOL. H	INDEX COOLING IC 411	ECCITAZIONE FREQ. (168 Hz)	PESO WEIGHT Kg --
--------------------------	------------------------------------	------------------------------	-------------	---------------------------------	----------------------------------	----------------------	-------------------------	-------------------------------	-------------------------



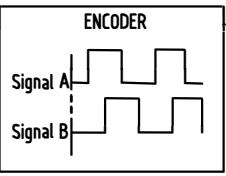
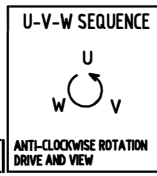
**CARATTERISTICHE SCANALATO INTERNO
EXTERNAL INVOLUTE SPLINE DATA**

ANSI B92.1-1970 (SPLINE PITCH 24/68 CL. 5)

N° DENTI / NUMBER OF TEETH	Z	19
MODULO / MODULE	Mh	1.0583/0.5292
DIAMETRO ESTERNO / MAJOR DIAMETER	De	21.59 +0.23
DIAMETRO INTERNO / MINOR DIAMETER	Di	19.48 +0.127
DIAMETRO PRIMITIVO / PITCH DIAMETER	Dp	20.1083
DIAMETRO DI BASE / BASE DIAMETER	Db	14.2187
DIAMETRO DI FORMA / FORM DIAMETER	dct	21.2065
ANGOLO DI PRESSIONE / PRESSURE ANGLE		45°
MEAS OVER PINS		17.05
MEAS PIN DIA		2.032

Cod. G1901400

Firma PROG. : Po M.



INCREMENTAL ENCODER

OUTPUT FORM: OPEN COLLECTOR
 POWER SUPPLY: +5 / +24 VDC
 OUTPUT CURRENT: 20 mA max.
 N° PULSE REVOLUTION: 64

N° PIN:	DESCRIPTION:	COLOUR:
1	+VCC	RED
2	GND	BLACK
3	SIGNAL A	WHITE(Green)
4	SIGNAL B	BLUE