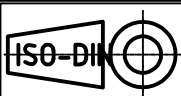




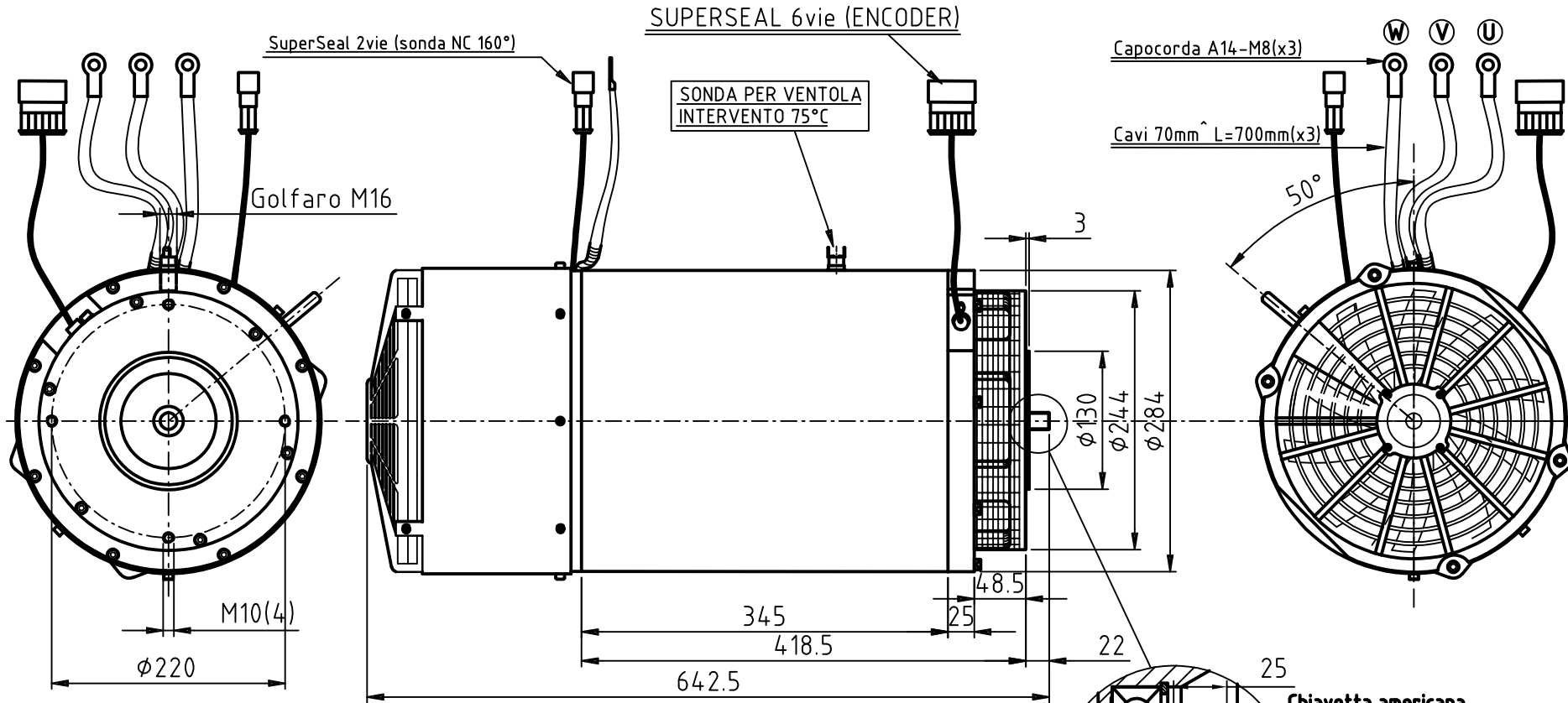
**BEST MOTOR**  
Tel. 059 - 858059  
fax. 059 - 850410



**MOTORE Ø284 TRAZIONE CON ENCODER E SONDA TERMICA 75°C  
ED ELETTROVENTOLA (REV. 1 DEL 08/07/2013)**



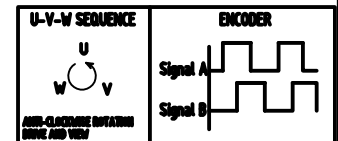
POTENZA POWER 14000 W	TENSIONE VOLTAGE 80 V	CORRENTE CURRENT 220 A	RPM 1800 RPM	SERVIZIO SERVICE S2 = 60'	SERVIZIO SERVICE S3 = 70%	CLASSE ISOL. H	VENTILAZIONE ESTERNA	ECCITAZIONE FREQ. 60Hz	PESO WEIGHT Kg 153
-----------------------------	-----------------------------	------------------------------	-----------------	---------------------------------	---------------------------------	----------------------	-------------------------	---------------------------	--------------------------



INCREMENTAL ENCODER		
OUTPUT FORM:		OPEN COLLECTOR
POWER SUPPLY:		+5 / +24 VDC
OUTPUT CURRENT		20 mA max.
N° PULSE REVOLUTION:		80
N°PIN:	DESCRIPTION:	COLOUR:
1	+VCC	RED
2	GND	BLACK
3	SIGNAL A	WHITE(Green)
4	SIGNAL B	BLUE
5/6	NOT USED	/

Cod. G1E0234H

Firma PROG. : Po M.



**G1E0234H**