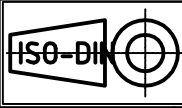




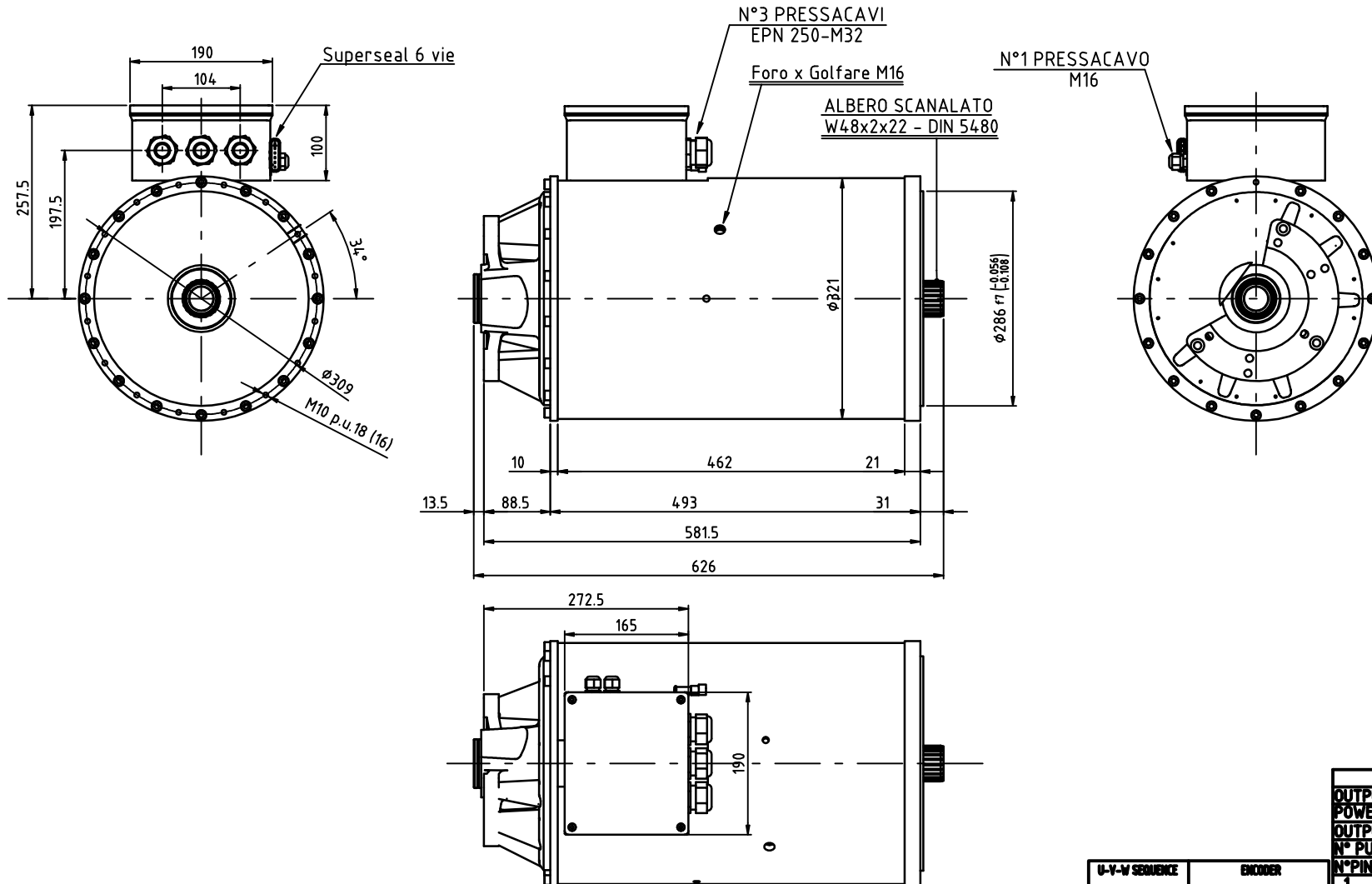
BEST MOTOR
Tel. 059 - 858059
fax. 059 - 850410



MOTORE-TRAZIONE $\phi 321$ - IP 54/65
(REV. 0 DEL 03/04/2012)

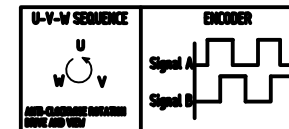


POTENZA POWER 30000 W	TENSIONE VOLTAGE 80 V	CORRENTE CURRENT 365 A	RPM 2400	SERVIZIO SERVICE S2 = 40'	SERVIZIO SERVICE S3 = -- %	CLASSE ISOL. H	NON VENTILATO	ECCITAZIONE AC-3M (84 Hz)	PESO WEIGHT Kg 215
------------------------------------	------------------------------------	-------------------------------------	--------------------	--	---	-----------------------------	-------------------------	-------------------------------------	---------------------------------



Cod. G1Z01100

Firma PROG. : Po M.



INCREMENTAL ENCODER		
OUTPUT FORM:	OPEN COLLECTOR	
POWER SUPPLY:	+5V +24 VDC	
OUTPUT CURRENT:	20 mA max.	
N° PULSE REVOLUTION:	80	
N°PIN:	DESCRIPTION:	COLOUR:
1	+VCC	RED
2	SIGNAL B	BLUE
3	SIGNAL A	WHITE(Green)
4	GND	BLACK
5/6	NOT USED	

G1Z01100